

METAL ART

gazzini
CERAMICHE D'ARTE



BLACK
GREY
TAUPE
IVORY

METAL ART





METAL ART



60x60 BLACK
30x60 BLACK







METAL ART



60x60 GREY
30x60 BLACK
10x30 GREY
30x30 GREY MURETTO
4x30 LONDON GREY
ESAGONO INTARSIO GREY/BLACK 10x10







METAL ART



60x60 TAUPE
5x20 TAUPE







METAL ART



60x60 IVORY

ESAGONO INTARSIO IVORY/TAUPE 10x10

IVORY MOSAICO KIOS MESH MOUNTED 30x30



METAL ART



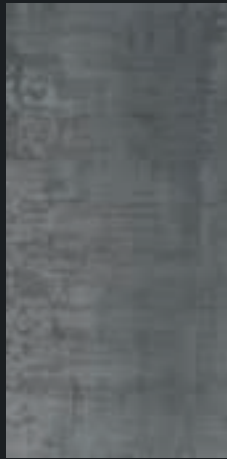
5x20 GREY

5x20 BLACK

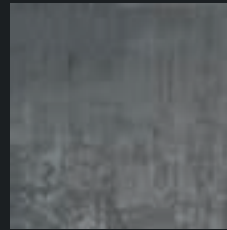




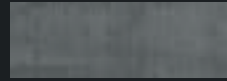
606146
METAL ART BLACK RETT.
60x60 / 24"x24" COD.79 □



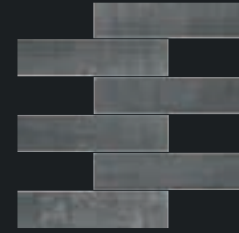
490445
METAL ART BLACK RETT.
30x60 / 12"x24" COD.76 □



040901
METAL ART BLACK RETT.
30x30 / 12"x12" COD.78 □



103061
METAL ART BLACK RETT.
10x30 / 4"x12" COD.79 □



050201
METAL ART BLACK
5x20 / 2"x8" (SFUSO) COD.93 □



040905
METAL ART BLACK 5x5
MESH MOUNTED 30x30 / 12"x12"
COD.22 ○



040909
METAL ART BLACK MURETTO 2,4x10
MESH MOUNTED 30x30 / 12"x12"
COD.45 ○



040913
METAL ART BLACK MOSAICO KIOS
MESH MOUNTED 30x30 / 12"x12"
COD.29 ○



390470
METAL ART ESAGONO INTARSIO GREY / BLACK 10X10
MESH MOUNTED 20x35 / 8"x14"
COD.57 ○



310188
METAL ART BLACK LONDON
4x30 / 1,6"x12" COD.32 ○



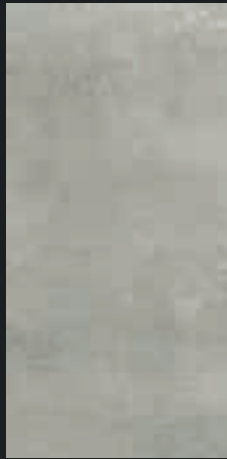
380206
METAL ART BLACK LISTELLO
7,2x30 / 2,8"x12" COD.14 ○

BLACK

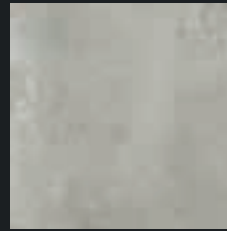




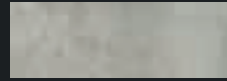
606145
METAL ART GREY RETT.
60x60 / 24"x24" COD.79 □



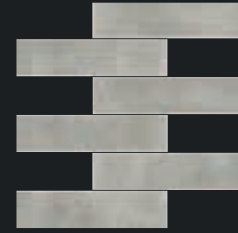
490447
METAL ART GREY RETT.
30x60 / 12"x24" COD.76 □



040903
METAL ART GREY RETT.
30x30 / 12"x12" COD.78 □



103063
METAL ART GREY RETT.
10x30 / 4"x12" COD.79 □



050203
METAL ART GREY
5x20 / 2"x8" (SFUSO) COD.93 □



040907
METAL ART GREY 5x5
MESH MOUNTED 30x30 / 12"x12"
COD.22 ○



040911
METAL ART GREY MURETTO 2,4x10
MESH MOUNTED 30x30 / 12"x12"
COD.45 ○



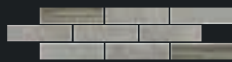
040915
METAL ART GREY MOSAICO KIOS
MESH MOUNTED 30x30 / 12"x12"
COD.29 ○



390470
METAL ART ESAGONO INTARSIO GREY / BLACK 10X10
MESH MOUNTED 20x35 / 8"x14"
COD.57 ○



310190
METAL ART GREY LONDON
4x30 / 1,6"x12" COD.32 ○

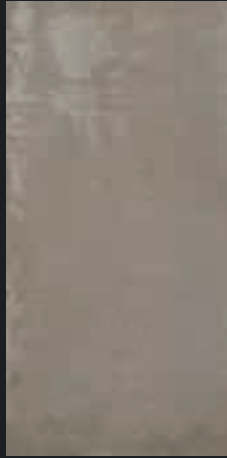


380208
METAL ART GREY LISTELLO
7,2x30 / 2,8"x12" COD.14 ○

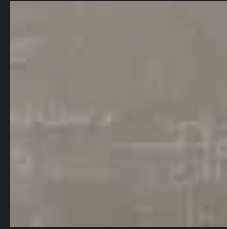
GREY



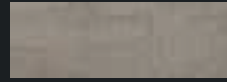
606147
METAL ART TAUPE RETT.
60x60 / 24"x24" COD.79 □



490448
METAL ART TAUPE RETT.
30x60 / 12"x24" COD.76 □



040904
METAL ART TAUPE RETT.
30x30 / 12"x12" COD.78 □



103064
METAL ART TAUPE RETT.
10x30 / 4"x12" COD.79 □



050204
METAL ART TAUPE
5x20 / 2"x8" (SFUSO) COD.93 □



040908
METAL ART TAUPE 5x5
MESH MOUNTED 30x30 / 12"x12"
COD.22 ○



040912
METAL ART TAUPE MURETTO 2,4x10
MESH MOUNTED 30x30 / 12"x12"
COD.45 ○



040916
METAL ART TAUPE MOSAICO KIOS
MESH MOUNTED 30x30 / 12"x12"
COD.29 ○



390469
METAL ART ESAGONO INTARSIO IVORY / TAUPE 10x10
MESH MOUNTED 20x35 / 8"x14"
COD.57 ○



310191
METAL ART TAUPE LONDON
4x30 / 1,6"x12" COD.32 ○

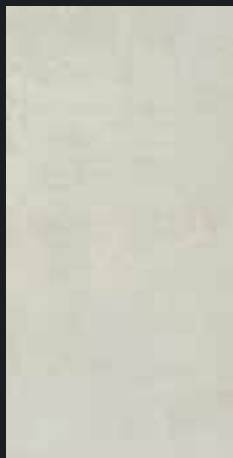


380209
METAL ART TAUPE LISTELLO
7,2x30 / 2,8"x12" COD.14 ○

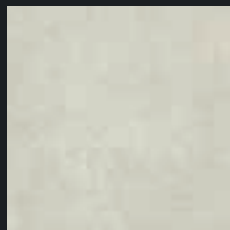
TAUPE



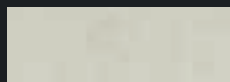
606144
METAL ART IVORY RETT.
60x60 / 24"x24" COD.79 □



490446
METAL ART IVORY RETT.
30x60 / 12"x24" COD.76 □



040902
METAL ART IVORY RETT.
30x30 / 12"x12" COD.78 □



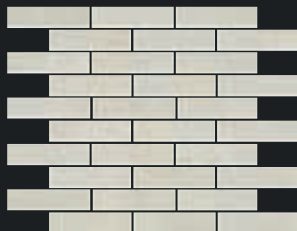
103062
METAL ART IVORY RETT.
10x30 / 4"x12" COD.79 □



050202
METAL ART IVORY
5x20 / 2"x8" (SFUSO) COD.93 □



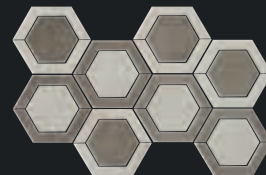
040906
METAL ART IVORY 5x5
MESH MOUNTED 30x30 / 12"x12"
COD.22 ○



040910
METAL ART IVORY MURETTO 2,4x10
MESH MOUNTED 30x30 / 12"x12"
COD.45 ○



040914
METAL ART IVORY MOSAICO KIOS
MESH MOUNTED 30x30 / 12"x12"
COD.29 ○



390469
METAL ART ESAGONO INTARSIO IVORY / TAUPE 10X10
MESH MOUNTED 20x35 / 8"x14"
COD.57 ○



310189
METAL ART IVORY LONDON
4x30 / 1,6"x12" COD.32 ○



380207
METAL ART IVORY LISTELLO
7,2x30 / 2,8"x12" COD.14 ○

IVORY

METAL ART

PEZZI SPECIALI • SPECIAL TRIMS • PIÈCES SPÉCIALES • FORMSTÜCKE



290593
METAL ART BLACK BATTISCOPA 5x30
COD. 17 △

290595
METAL ART GREY BATTISCOPA 5x30
COD. 17 △

290594
METAL ART IVORY BATTISCOPA 5x30
COD. 17 △

290596
METAL ART TAUPE BATTISCOPA 5x30
COD. 17 △



490479
METAL ART BLACK GRADINO 33x60
COD. 112 ○

490480
METAL ART GREY GRADINO 33x60
COD. 112 ○

490481
METAL ART IVORY GRADINO 33x60
COD. 112 ○

490482
METAL ART TAUPE GRADINO 33x60
COD. 112 ○



290597
METAL ART BLACK BATTISCOPA 5x60
COD. 22 △

290599
METAL ART GREY BATTISCOPA 5x60
COD. 22 △

290598
METAL ART IVORY BATTISCOPA 5x60
COD. 22 △

290600
METAL ART TAUPE BATTISCOPA 5x60
COD. 22 △



490483
METAL ART BLACK ANGOLARE 33x60
COD. 107 ○

490484
METAL ART GREY ANGOLARE 33x60
COD. 107 ○

490485
METAL ART IVORY ANGOLARE 33x60
COD. 107 ○

490486
METAL ART TAUPE ANGOLARE 33x60
COD. 107 ○

□ = mq ○ = pz △ = ml

PER UNA POSA OTTIMALE DEL PRODOTTO CONSIGLIAMO SEMPRE DI MESCOLARE ALMENO TRE SCATOLE DI MATERIALE.

For the best product laying results, material from at least three boxes should be mixed.

Für eine optimale Verlegung des Erzeugnisses empfehlen wir stets, mindestens drei Packungen Material anzumischen.

Pour une pose excellente, nous recommandons toujours de mélanger le contenu d'au moins trois boîtes.

CERAMICA GAZZINI E L'AMBIENTE

In accordo con la norma ISO 1402 "Environmental labels and declarations" si dichiara che:
L'azienda è impegnata nella continua innovazione tecnologica dei propri processi per realizzare prodotti sempre più rispondenti alle richieste del mercato e nell'ottica di:

- riduzione del consumo energetico dei processi di produzione;
- riduzione delle emissioni nell'aria e nell'acqua;
- miglioramento dell'informazione al consumatore e della gestione dei rifiuti.

Per limitare il proprio impatto ambientale CERAMICA GAZZINI S.p.A. opera come di seguito descritto:

- gli scarti di lavorazione sono completamente gestiti e riutilizzati;
- tutti gli stabilimenti produttivi sono dotati di impianto di depurazione delle acque a circuito chiuso con recupero totale degli scarichi idrici provenienti dal ciclo produttivo e nessuno scarico in ambiente;
- le emissioni gassose sono autorizzate dall'autorità competente, dotate di impianti per l'abbattimento degli inquinanti e sottoposte a controllo periodico per verifica del rispetto della legislazione vigente;
- i rifiuti industriali sono smaltiti in conformità alle direttive comunitarie;
- gli imballaggi sono destinati al recupero e riutilizzo;
- l'impatto acustico nell'ambiente è attenuato con l'utilizzo di tecnologie idonee.

Le piastrelle ceramiche prodotte sono:

- un prodotto con una lunga durata di vita
- riciclabili al termine dell'utilizzo

CERAMICA GAZZINI AND THE ENVIRONMENT

In line with the ISO 14021 standard "Environmental labels and declarations" we declare that:

The company is committed to the continued technological innovation of its processes to create products that increasingly meet the demands of the market and focus on:

- reduced energy consumption in production processes;
 - reduced emissions into the air and water;
 - improving consumer awareness and waste management.
- To curb its environmental impact, CERAMICA GAZZINI S.p.A. has taken the following steps:
- manufacturing rejects are fully managed and reused;
 - all the production units are equipped with a closed-circuit water purification plant with total recovery of liquid discharges coming from the production cycle and no discharges into the environment;
 - emissions of gases are authorised by the competent authority, pollutant abatement systems are fitted and undergo periodic checks to verify they comply with the current laws;
 - industrial waste is disposed of in compliance with the community directives;
 - packaging is sent off to be recycled and reused;
 - the acoustic impact on the environment is toned down via the use of suitable technologies.

The ceramic tiles produced are:




- a long-lasting product
- recyclable at the end of their use

CARATTERISTICHE DI QUALITÀ
 QUALITY CHARACTERISTICS
 CARACTÉRISTIQUES DE QUALITÉ
 QUALITÄTSEIGENSCHAFTEN

NORMA
 NORM
 NORME
 NORME

REQUISITO NORMA
 REQUIRED STANDARDS
 VALEUR PRESCRITE SELON LA NORME
 NORMVORGABE

RISULTATO
 RESULT
 RÉSULTAT
 ERGEBNISS

	Assorbimento d'acqua Water absorption of the body Absorption d'eau de support Wasseraufnahme des Scherbens	ISO 10545-3	≤ 0,5	0,1%
	Resistenza a flessione Breaking strenght Résistance à la flexion Biegefestigkeit	ISO 10545-4	≥ 35 N/mm ²	47 N/mm ²
	Resistenza all'abrasione Abrasion resistance Resistance a l'abrasion Abriebbestaendigkeit	ISO 10545-7		PEI V Black PEI IV
	Resistenza al gelo Frost resistance Résistance au gel Frostbeständigkeit	ISO 10545-12	Nessun campione deve presentare rotture o alterazioni apprezzabili alla superficie No samples must show ruptures or noticeable surface alteration Aucuns enchantions doit présenter ruptures ou altérations appréciables de la surface Keines der Muster sollte Risse oder sichtbare Fehler der Oberflaeche zeigen	Conforme Conformity Conforme Gemäss
	Resistenza all'attacco chimico Chemical resistance Résistance à l'attaque chimique Beständigkeit gegen Chemikalien	ISO 10545-13	Nessun campione deve presentare alterazioni visibili all'attacco chimico No samples must show visible signs of chemical attack Aucuns enchantions doit présenter des altérations visibles à l'attaque chimique Keines der Muster sollte sehenswerte Aenderungen nach Behandlung mit Chemikalien zeigen	Conforme Conformity Conforme Gemäss
	Resistenza agli sbalzi termici Thermal shock resistance Resistance aux ecartis de température Temperaturwechselbeständigkeit	ISO 10545-5		Conforme Conformity Conforme Gemäss
	Resistenza scivolosità Sliding resistance Resistance au glissement Rutschfestigkeit	DIN 51130 R		R9
	Coefficiente d'attrito (statico) Friction coefficient (static) Reibungskoeffizient (statische) Coefficient de friction (statique)	ASTM C 1028	> 0,6 ≥ 0,6	DRY > 0,6 WET > 0,6
	Moderata Variazione Moderate Variation Variation modérée maessige Abweichung			V3

 Aspetto uniforme
Uniform appearance
Aspect uniforme
einheitliches Aussehen


V1

 Lieve Variazione
Slight Variation
Légère Variation
geringe Abweichung

V2

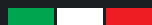
 Moderata Variazione
Moderate Variation
Variation modérée
maessige Abweichung

V3

 Forte stonalizzazione
Substantial Variation
Effet dénuancé très accentué
akzentuierte Variation

V4

MADE IN ITALY



mktg_Gazzini project_www.digitalpuntoservice.it photo_www.puntoimmaginesrl.it print_Arti Grafiche Castello



Ceramica Gazzini SpA - via Milano, 2 - 42048 Rubiera (Reggio Emilia) Italy
Tel. 0522 628112 - 627518 - 628639 - Fax 0522 628437
info@ceramicagazzini.it - www.ceramicagazzini.it

C.F. E P.I. 00140380353 - REG. IMP. REGGIO EMILIA N° 00140380353
CAPITALE SOCIALE I.V. € 546.000,00

